

**Bio211**  
**Laboratory 10**

**Organs of Special Sense**  
**Ear & Eye**

---

---

---

---

---

---

---

---

Brain, Cranial Nerves, and Spinal Cord

- Objectives for today's lab
  - Become familiar with the gross anatomy of the ear and the eye (Remember: you are responsible **ONLY** for the structures listed in your Laboratory Handout)
  - Perform simple visual tests

---

---

---

---

---

---

---

---

The Ear

The diagram illustrates the anatomy of the human ear, divided into three main sections: EXTERNAL EAR, MIDDLE EAR, and INNER EAR. Key structures labeled include the Auricle, External auditory canal, Cartilage, Tympanic membrane, Oval window, Round window, Auditory tube, Auditory ossicles, Semi circular canals, Petrous portion of temporal bone, Vestibule, Vestibulocochlear nerve (N VIII), Cochlea, Bony labyrinth of inner ear, and Facial nerve (N VII). The diagram also shows the connection to the pharynx.

---

---

---

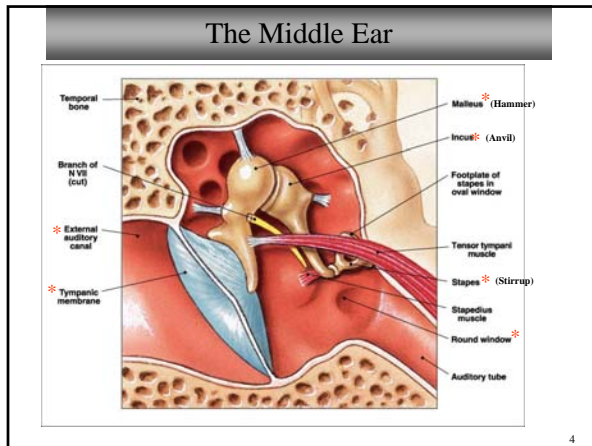
---

---

---

---

---




---

---

---

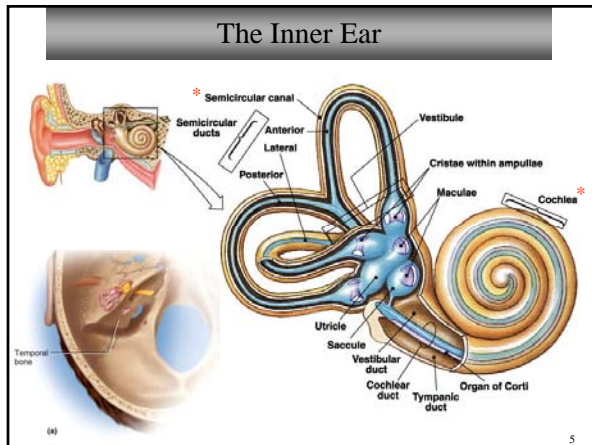
---

---

---

---

---




---

---

---

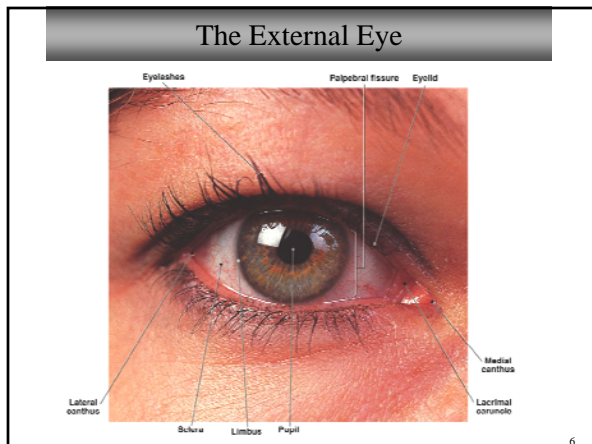
---

---

---

---

---




---

---

---

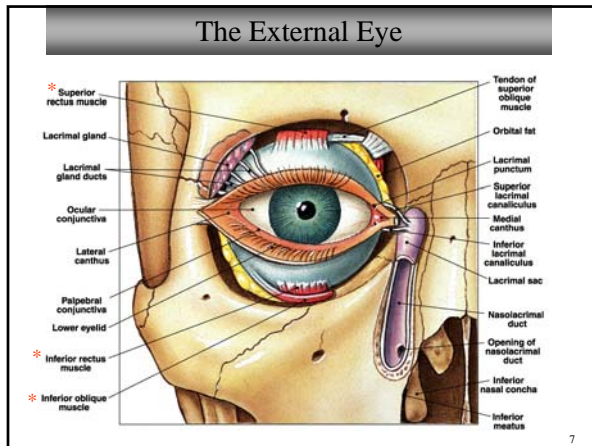
---

---

---

---

---




---

---

---

---

---

---

---

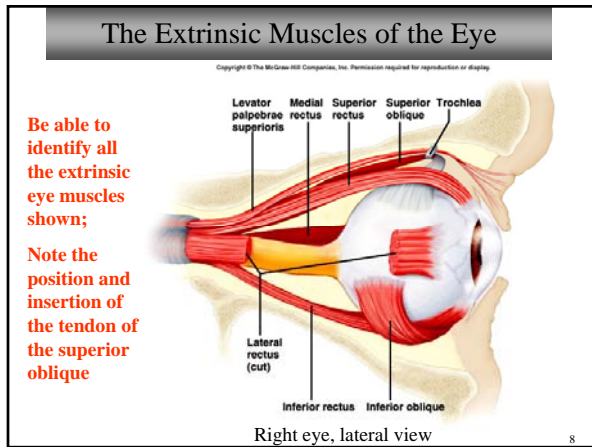
---

---

---

---

---




---

---

---

---

---

---

---

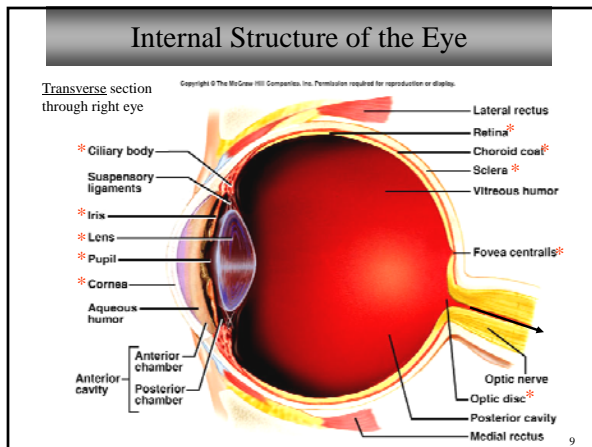
---

---

---

---

---




---

---

---

---

---

---

---

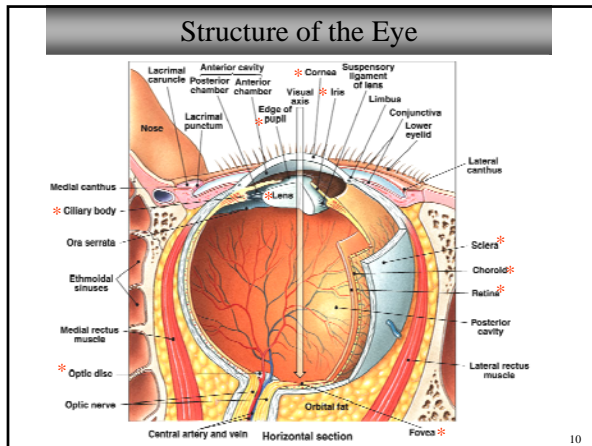
---

---

---

---

---




---

---

---

---

---

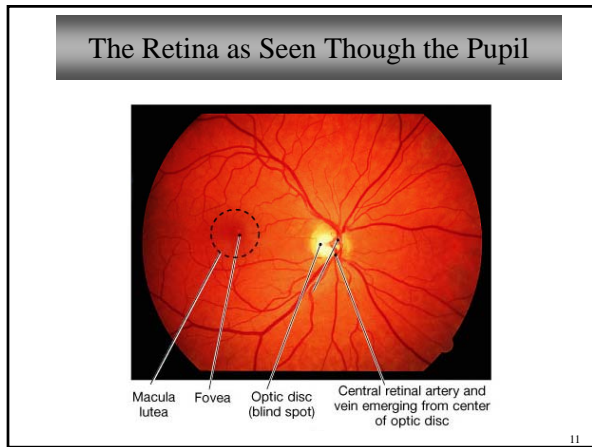
---

---

---

---

---




---

---

---

---

---

---

---

---

---

---

- ### What you should do in lab today...
- Label figures from:
    - Eye
      - Wood's Lab Exercise 29 Lab Report, p. 449
      - Hole's Lab Report 34, p. 263
    - Ear
      - Wood's Lab Exercise 31 Lab Report, p. 483
      - Hole's Lab Manual Figs. 32.1 & 32.2, p. 242
  - This will give you an overview of the structures for which you are responsible on the lab exam
  - Use the models in the lab to find the structures listed in your Laboratory Guide for Eye and Ear models (use the HomeLab Atlas or the DeGraaff atlas for legends)
  - Do the visual tests (I will talk about these in the lab) and **COMPLETE LAB REPORT I distributed**, and hand this in before you leave today.
- 12

---

---

---

---

---

---

---

---

---

---

### What You Need to Know for the Lab Exam

- Be able to recognize all the structures listed in your Laboratory Guide
  - Muscles on torso models (heads) and small muscle men (Somso)
  - Human brain models; sheep brains; also see sagittal section plaque
  - Spinal cord models and spinal cord microscope slide
  - Eye models and Ear models from today (be sure to know both the common and Latin names for middle ear bones)
- You should also understand the visual tests you are going to perform in the eye lab (Explanation in Wood pp. 451-455, and Hole pp. 267-271).
- See the Study Guide for Lab Exam 3 for complete details.

---

---

---

---

---

---

---

---